



# Mastering

## SAP BusinessObjects

Premier Partners:



Supported by:



Produced by:



# Mastering

SAP BusinessObjects

## **What's New With SAP BusinessObjects XI 3/BI 4 Administration and Security?**

Alexandre Biegala – GB and Smith  
(France)



# Main Message

- What I'll cover
- BOE Xi R2 security concepts
- BOE Xi 3 security concepts
- SAP BI 4 security: What's new?
- Migration and Implementation: Challenges
- 360view: Replace the CMC, BO administration is so easy
- Questions
- Key Points to Take Home



# Introduction & Overview

**Security definition:** User rights and restrictions = links between actors (user or group) and

Universes - Universe overloads

Documents

Applications - security commands.

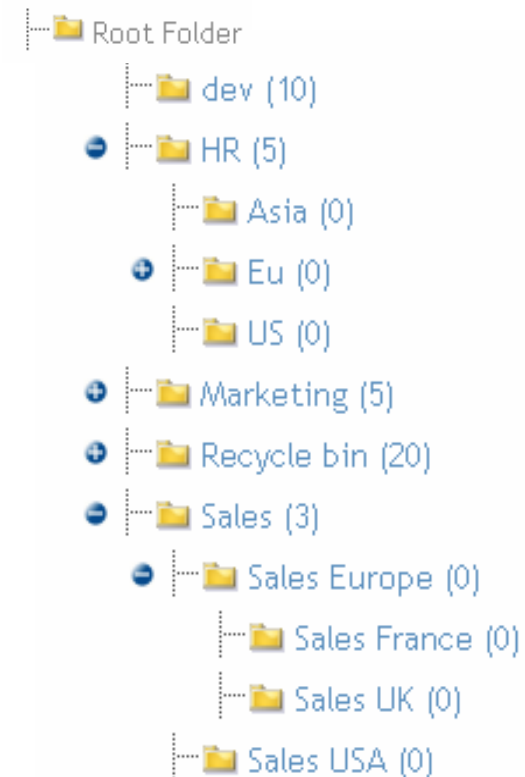
With SAP BI4 coming out, did security change? – Not really! The changes are more important in XI3 from a pure security perspective and in BI4 from a software perspective (import wizard, LCM and CMC) BUT you will need to take some things into account.

Attending this session will help you to understand those changes and take advantage of them.



# BOE XIR2 security: Folders

- Universes and documents are stored within folders.
- Objects can be stored in one folder only. There are four folder trees.
- Think like Windows. It is a set of doors.



# BOE XIR2 security: Groups/Users

- Group structure is no longer a classic tree. A group can belong to more than one group. A kind of acyclic graph.
- Create two group trees: Functional groups and technical groups.
- A user can belong to more than one group (the Everyone group, a technical group and a functional one).



# BOE XIR2 security: Security matrix

**Explicit right**                      **Closed system**                      **Inherited right**

	Administrators	Everyone	Worldwide sales	Sales Europe	US sales
Root Folder	A	NA	(NA)	(NA)	(NA)
Sales (...)	(A)	(NA)	VOD	(VOD)	(VOD)
Sales Europe (...)	(A)	(NA)	(VOD)	(VOD)	(VOD)
Sales France (...)	(A)	(NA)	(VOD)	(VOD)	(VOD)
Sales UK (...)	(A)	(NA)	(VOD)	(VOD)	(VOD)
Sales USA (...)	(A)	(NA)	(VOD)	(VOD)	(VOD)

The diagram illustrates a security matrix for BOE XIR2. It shows a hierarchy of folders and groups. The 'Explicit right' column shows 'A' for Administrators and 'NA' for Everyone. The 'Closed system' column shows '(NA)' for all folders. The 'Inherited right' column shows '(VOD)' for all folders. A box highlights the 'Sales' folder and its subfolders, with an arrow pointing to the 'Rights double inheritance: Folder and Group' caption.

**Rights double inheritance: Folder and Group**

# BOE XIR2 security: Rights overload

	Administrators	Everyone	Worldwide sales	Sales Europe	English sales	US sales	
Root Folder	A	NA	(NA)	(NA)	(NA)	(NA)	
Sales (...)	(A)	(NA)	VOD	(VOD)	(VOD)	(VOD)	
Sales Europe (...)	(A)	(NA)	(VOD)	View Refresh	(A)	(VOD)	
Sales France (...)	(A)	(NA)	(VOD)	(A)	(A)	(VOD)	
Sales UK (...)	(A)	(NA)	(VOD)	(A)	(A)	(VOD)	
Sales USA (...)	(A)	(NA)	(VOD)	(VOD)	(VOD)	(VOD)	

# BOE XIR2 security: Effective rights

- Three possible explicit values on security commands:
  - Explicitly granted (G): User or group is given the right.
  - Explicitly denied (D): User or group is denied the right.
  - Not specified (NS): No right assignment.
- Effective rights (user real rights) = explicit rights aggregation.

	NS	G	D	G + NS	D + NS	G + D
Xir2 Objects	D	G	D	G	D	D



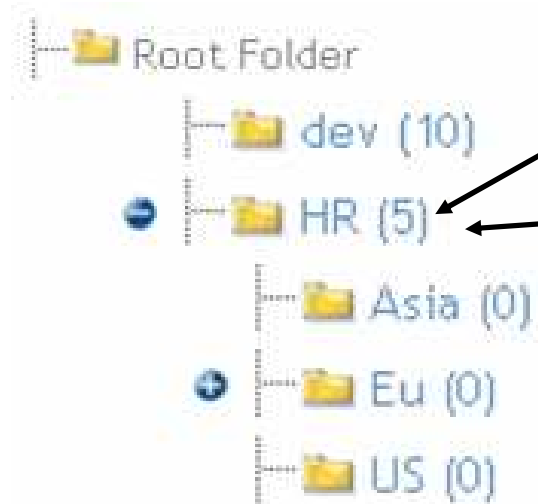
# BOE XI3 security: General info

- New CMC interface: Training session needed.
- No modification on contents / actors:
  - Folders organization remains the same: 4 folder trees.
  - No change on groups structure.
  - Still 2 category trees.
  - Servers and connections unchanged.
- New kind of objects: Access level are objects like others.
  - Predefined Access Level (NA, VOD, FC ...).
  - Custom profiles. Set of security commands.
  - Security on them within a matrix.
  - Advanced rights still exist.



# BOE XI3 security: Rights

- Rights are now divided in collection: General, Content, Application and System.
- Rights have been duplicated on content: Hundreds of rights.
- Content rights overload general rights.



General right set: Schedule Objects prohibited.

Content right overloads General settings:  
Schedule Deski Documents allowed.




## Net result:

**Schedule documents not allowed except  
Deski documents.**



# BOE XI3 security: Universes

- Users can have two different profiles: report consumer and report creator.
- List of universes to refresh documents: (report consumer)

	Finance
	HR
	Marketing
	Sales

- List of universes to create / modify queries: (report creator)

	Finance
	Marketing
	Sales

# BOE XI3 security: Folder inheritance

- You can specify whether or not a right is applied at:
  - Object level (only at door level)
  - Sub Object level
  - Or both.



General

General

✓ ✗ ? [Folder] [Folder] [Folder] General

|    | Add objects to folders that the user owns (Owner right)

|    | Add objects to the folder

# BOE XI3 security: Matrix

- Impact on rights inheritance: Trumping of rights

	Administrators	Everyone	Worldwide sales	Sales Europe	English sales	US sales	
Root Folder	FC	A					
Sales (...)	{FC}	NA	VOD	{VOD}	{VOD}	{VOD}	
Sales Europe (...)	{FC}	NA	{VOD}	A	{A}	{VOD}	
Sales France (...)	{FC}	NA	{VOD}	{VOD}	{VOD}	{VOD}	
Sales UK (...)	{FC}	NA	{VOD}	{VOD}	{VOD}	{VOD}	
Sales USA (...)	{FC}	NA	{VOD}	{VOD}	{VOD}	{VOD}	

Right only applied for one door and not to sub doors!

# SAP BI4 security: General info

- CMC interface similar to XI3: no training needed (coming from XI3).
- No modification on contents / actors:
  - CAL. There is a NEW predefined CAL: Full Control (Owner)

Central Management Console

CMC Home

Welcome: **Administrator** | Preferences | Help | Log Off

**Organize**

- Folders
- Personal Folders
- Categories
- Personal Categories
- Users and Groups
- Profiles
- Inboxes
- Servers
- Replication Lists
- Federation
- Query Results
- Temporary Storage

**Define**

- Access Levels
- Calendars
- Events

**Manage**

- Instance Manager
- Applications
- Settings
- Sessions
- Authentication
- License Keys
- Visual Difference

# SAP BI4 security: Licensing info

- There is a new type of license (old (concurrent, named, CPU), new based on user role (closer to SAP one)).
- BI Analyst role:
  - Content creator,
  - Edit or create reports,
  - Design and manage universes,
  - Perform any administrative tasks in the CMC.
- BI Viewer role:
  - Content consumers ONLY,
  - They cannot create, update or modify reports nor ,
  - They cannot perform any administrative tasks in the Designer or the CMC.
- License compliance tool to run audits like SAP world: BOMLT.



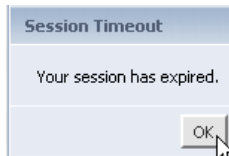
# SAP BI4 security: CMC New feature

## MAJOR ENHANCEMENTS:

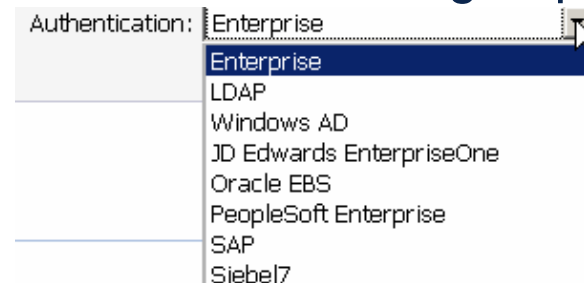
- Visual difference: compare universes and documents. (TBC)
- Cryptographic management (FIPS-140 compliant (US standards)).
- One central point to enable Audit. Audit user activity within all the web BI components (CR, BI launchpad) and admin (CMC, LCM). New schema.
- Server monitoring (dashboard, alerts capturing runtime and historical metrics of BI4 servers and applications).

## MINOR ENHANCEMENTS:

- Session timeout alert
- Setup Webi (BI launchpad) user preferences based on group.
- Better integration for ERP Solutions.



Authentication type:



# SAP BI4 security: Backup/Promotion

- Like for old version, CMS database and Filestore for full backup.
- LCM to backup content (versioning) and for content promotion.
- The Import Wizard is no longer existing.
- BIAR Engine: Command-Line Tool only allowing to promote objects between different (BI4 only) environments and to create backups.
- Upgrade management tool new component to upgrade content of your BI repository from a previous version of SAP BOE. Upgrade is possible from BOE XIR2 SP3 or higher (for earlier versions, you need to first upgrade to XI R2 SP2 or XI 3)



# Migration to XI3/BI4 challenges

- BOE Xi 3/BI4 security model is powerful.
- Understand the new security concepts.  
Take advantage of them.  
Redesign your security model.
- Migration to BI4: redefine your promotion/backup strategy.
- Challenges of security migration or implementation:
  - Manage the repository post migration or post implementation, whilst limiting administration tasks and by offering an optimum quality of service to end-users.
  - Implement and Document your Xi security.



# 360suite: optimize BO project costs

Like almost 200 customers world wide you can use our suite to optimize SAP BO project costs:

**360view™** Manage, audit and document BOXI security

**360plus™** Securely backup your entire BOE platform  
Selective restore of any content, including deleted content (like a personal document deleted by mistake)

**360eyes™** Run impact analysis (downstream effect of any universe object / SQL change).  
Follow the evolution your SAP BOE platform through time  
Query and analyze your SAP BOE platform data using Webi

**360cast™** Schedule Dynamically BO reports



# 360suite: key features

Top 10 360suite awesome features:

- 1) Manage security using web matrix
- 2) Document (Excel export) your CMS (security matrix, groups, users, universe overloads ...)
- 3) Schedule backup of your entire Business Objects platform
- 4) Selective restore of any version including deleted content (like personal documents)
- 5) Run impact analysis (universe object and SQL)
- 6) Run jobs (BIAR, import users, Excel exports ...) from an Enterprise scheduler (ControlM, \$U...)
- 7) Query the SAP BO repository using a universe
- 8) Dynamically schedule BO reports
- 9) Document any element of the deployment (objects, universes, conditions, auditor data ...). Cross check those data
- 10) Follow your BOE platform evolution through time.



Questions



# 4 Key Points to Take Home

The new BOE Xi 3 / BI4 security model is powerful.

Don't forget to think about the future daily administration.

Rebuild your promotion/versioning strategy while migrating to BI4.

Give a try to 360view to see how it's easy to manage your environment without the CMC. Visit us at our booth.





**Alexandre Biegala**

GB and SMITH

alexandre@gbandsmith.com

<http://www.gbandsmith.com>

<http://www.youtube.com/360suite>



# Mastering

## SAP BusinessObjects

Premier Partners:



Supported by:



Produced by:

